



PV-ezRack SolarTerrace Eco

Aluminum ground mounting system



Worldwide network



Clenergy Australia
 1/10 Duerdin Street, Clayton VIC 3168 Australia
 Tel: +61 3 9239 8088 Fax: +61 3 9239 8024
 E-mail: sales@clenergy.com.au www.clenergy.com.au

Clenergy China
 999-1009 Min'an Rd, Huoju Hi-tech Ind. Dev. Zone
 Xiang'an District 361101, Xiamen, Fujian, China
 Tel: +86 592 311 0088 Fax: +86 592 599 5028
 E-mail: sales@clenergy.com.cn www.clenergy.com.cn

Clenergy Europe
 Esplanade 41, 20354 Hamburg, Germany
 Tel: +49 40 3562 389-00
 E-mail: sales_de@clenergy.com

Clenergy Japan
 SOHO STATION 401, 24-8 Yamashita-cho, Naka-ku
 Yokohama, 231-0023 Japan
 Tel: +81 45 228 8226 Fax: +81 45 228 8316
 E-mail: sales@clenergy.co.jp www.clenergy.jp

Clenergy Philippines
 145 Yakal St., San Antonio village, Makati City, Philippines
 Tel: +63 977 8407282 +63 977 8407240
 E-mail: sales_ph@clenergy.com www.clenergy.ph

Clenergy Thailand
 9/2, 5th Floor, Vorasin Building, Soi Yasooob 2, Viphavadee-Rungsit Road,
 Chomphon Sub-district, Chatuchak District, Bangkok 10900
 Tel: +66 63 228 0200, +66 81 969 5152
 E-mail: sales_th@clenergy.com, support_th@clenergy.com



PV-ezRack SolarTerrace Eco

Aluminum ground mounting system

Clenergy PV-ezRack® SolarTerrace Eco (hereinafter referred to as ST Eco) is a pre-assembled ground PV-Module mounting system, which is suitable for large-scale commercial installation and multi-purpose installation. ST Eco has been developed as a mounting system for various PV-module. Innovative and unique ST Eco's M module channel Rails are convenient and help to improve the installation precision. Using high quality engineered components, ST Eco is more suitable for areas with higher salinity, and greatly saves labor time and cost, especially delivering large scale projects.

Main Benefits

Excellent Corrosion Resistance

Anodized aluminum and SUS304 stainless steel parts make the system suitable for even the toughest corrosive environments, such as coastal areas. The connections between parts in the Pre-assembled Supports adopt Stainless T-bolt, which owns higher anti-oxygenic property, making it more suitable for areas with higher salinity.

Easy and fast installation

The support legs of ST Eco are completely pre-assembled, they only need to be opened up and secured to the foundation. They even have the positioning Rail Clamps pre-installed, so you don't need measure and mark Rail positions anymore. The combination of these features saves valuable time in assembly and logistics. Besides, End/Inter Clamps adopt innovative designed M-module, which on step further to save installation time.

Economy

On one hand, ST Eco uses the latest developed Rail, which greatly reduce invalid area to realize structure strong as well as lower cost. On the other hand, it offers serialized options, including serialized Support- Shape, Girders and Rails, to target situation.

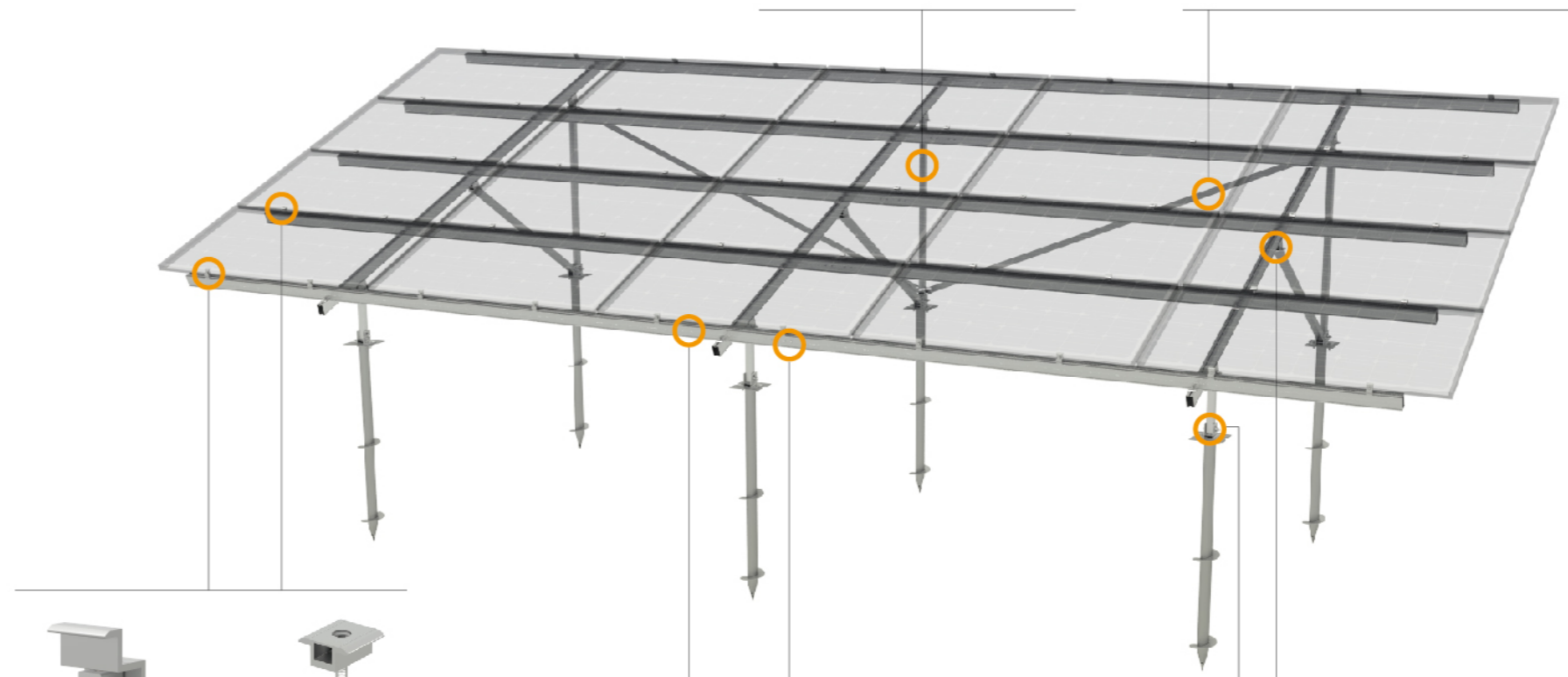


Ground Screw

ST Eco is available to Ground Screw foundation as well as concrete foundation.

Support

The ST Eco Supports are completely pre-assembled. It offers serialized options-W, N, A Shape to realize structure strong as well as lower cost. Support is used for fixing Rails.



EC-M/OM

End Clamp, with M-module

Click the M-Module into the channel of LS/M Rail and place the End Clamp at the first or last PV-Module of each array. The Clamp is used for fixing PV-Module.



ICII-M

Inter Clamp, with M-module

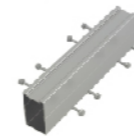
Click the M-Module into the channel of LS/M Rail and place the Inter Clamp between two PV-Modules. The Clamp is used for fixing PV-Module.



R-LS/ML

LS Rail with M-module channel (LS/M Rail)

Innovative section structure with superbly reduced invalid area, it offers strong structure in the lowest cost. The LS/M Rail is used for support PV-module.



SP-LS/M

Splice for LS Rail



ER-HB-ST16/50A

Hexagonal Bolt M16*50 (with nut and washer)

The Angel Aluminum Alloy is used to enhance lateral structure strength. It is fixed on rear legs of Support with Connector, which position can be easily adjusted during installation.



CO-RT-55/50

Connector for Rectangular Tube

Materials

AL6005-T5 | SUS304
Contact us or one of our qualified resellers for a personalised quotation today.

10 Year Warranty*

Commercial

Residential

International Patent
PCT/AU2009/000616

*see Clenergy PV-ezRack warranty for further details